



## Anwendung

Wasser: Trink- /Abwasser



Klima: Wärme/Kälte



Energie: Strom/Gas/Wasser

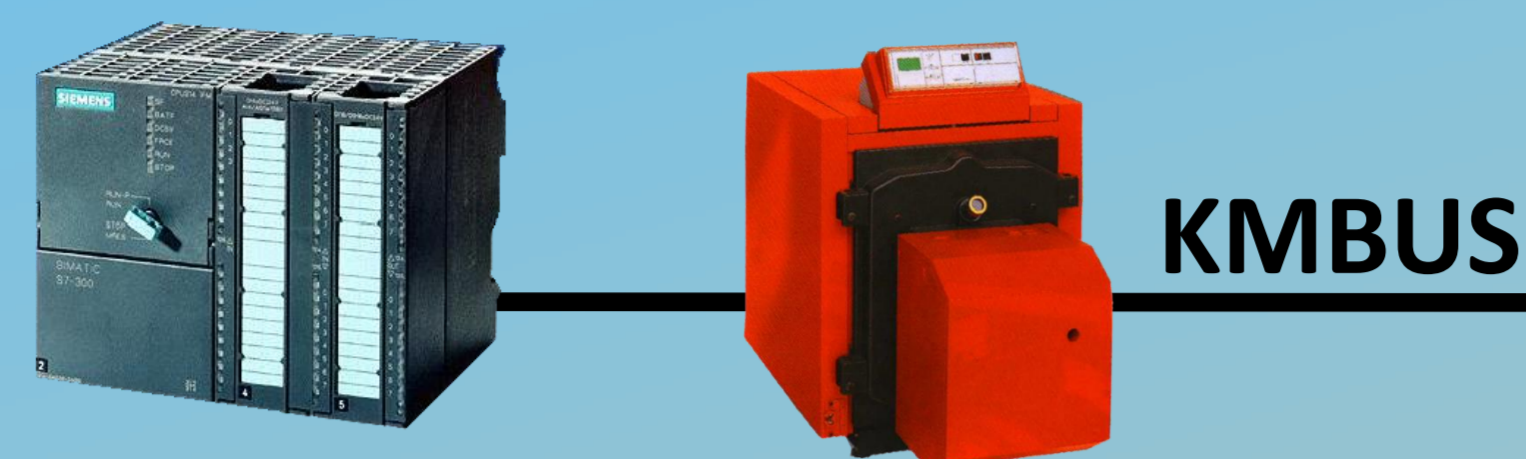


Natur/Umwelt



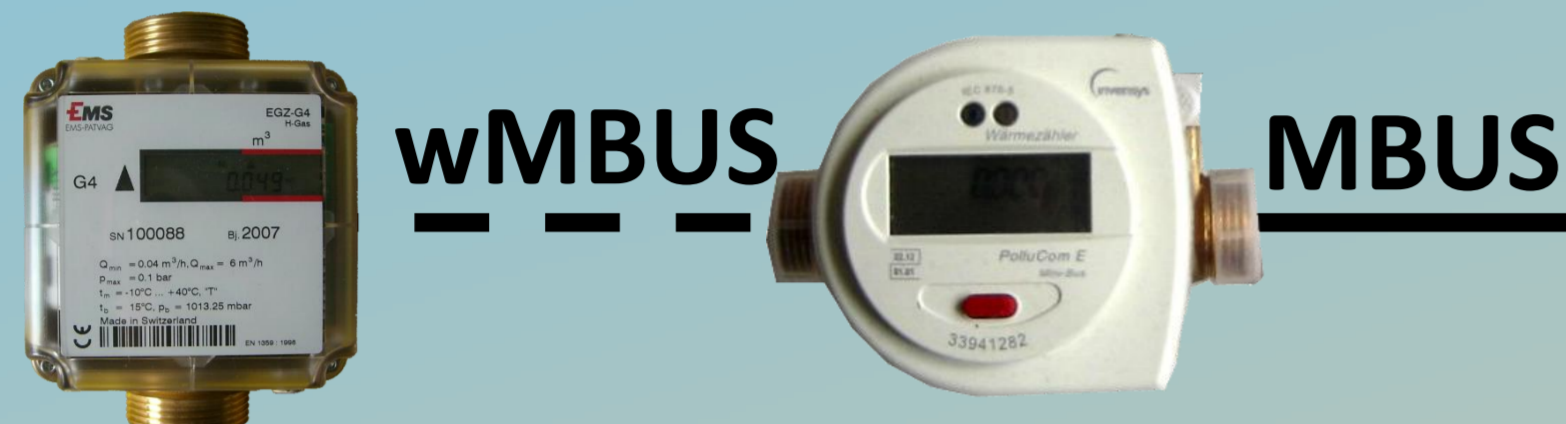
## Aktoren/Sensoren

### Protokolle



KMBUS

### Messen/Zählen



wMBUS

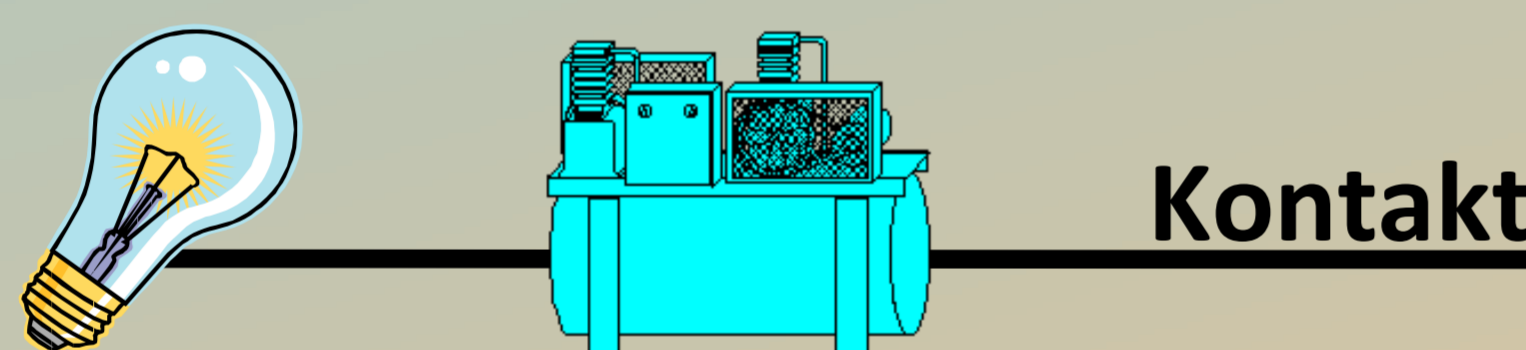
MBUS



MINIBUS

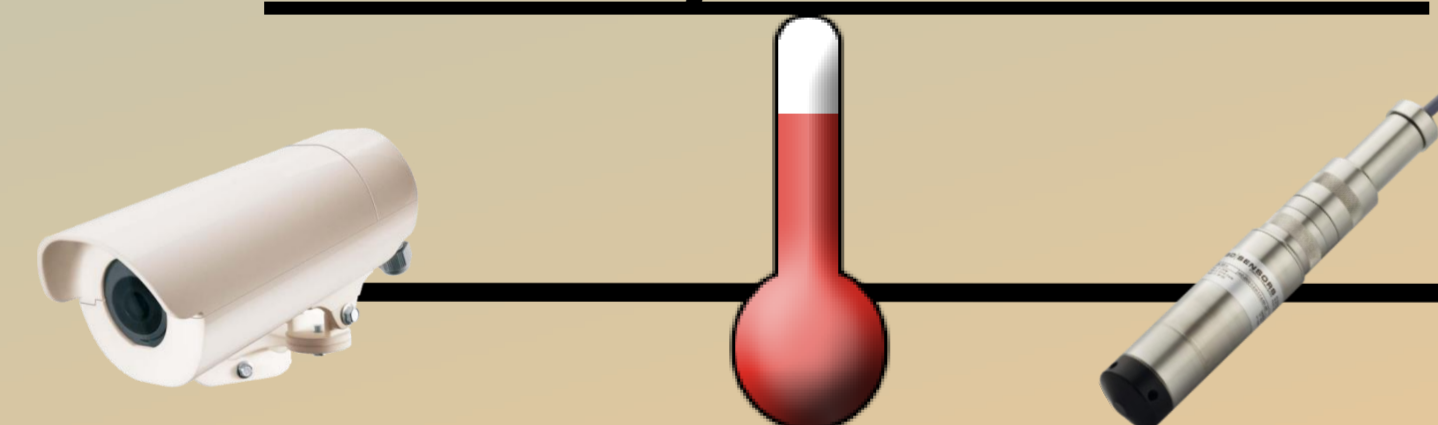
Impuls

### Steuern/Regeln



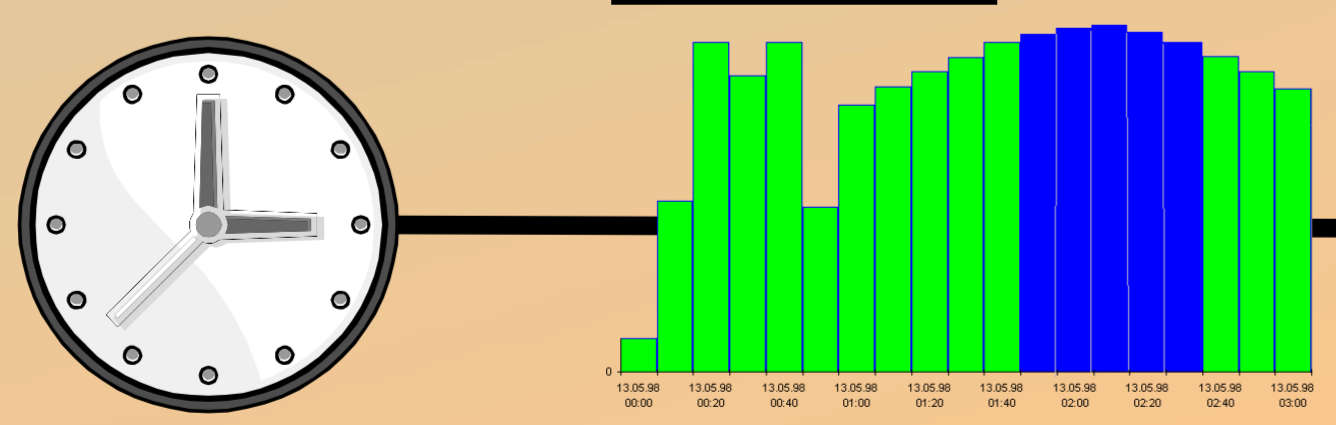
Kontakt

### Messen/Überwachen

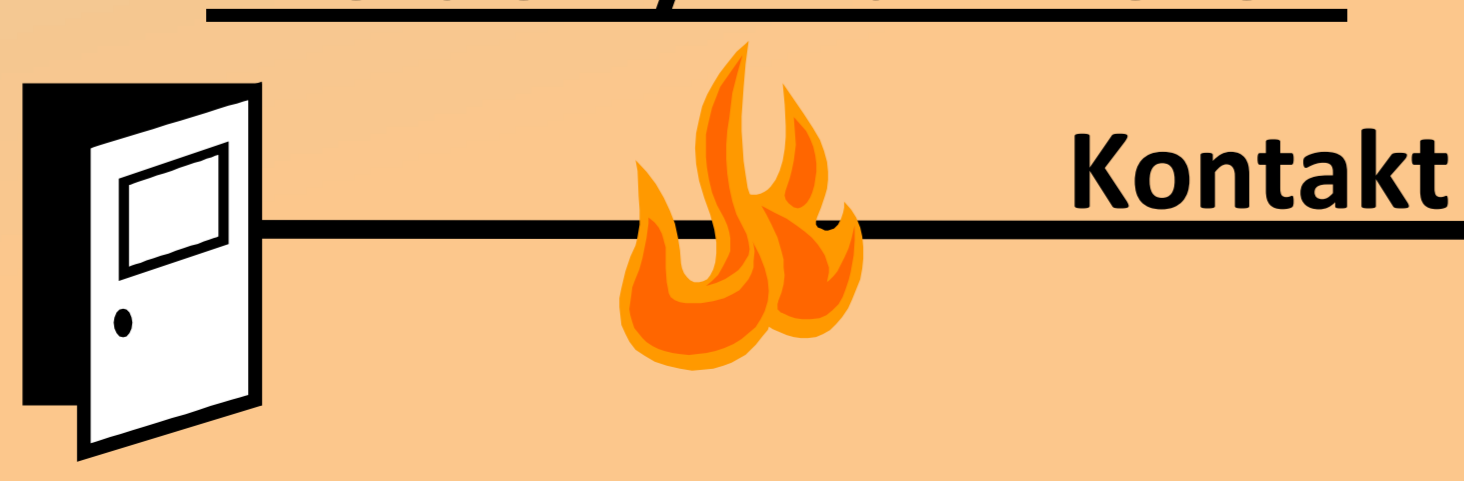


USB/I<sup>2</sup>C / 1-wire/V/mA

### Loggen



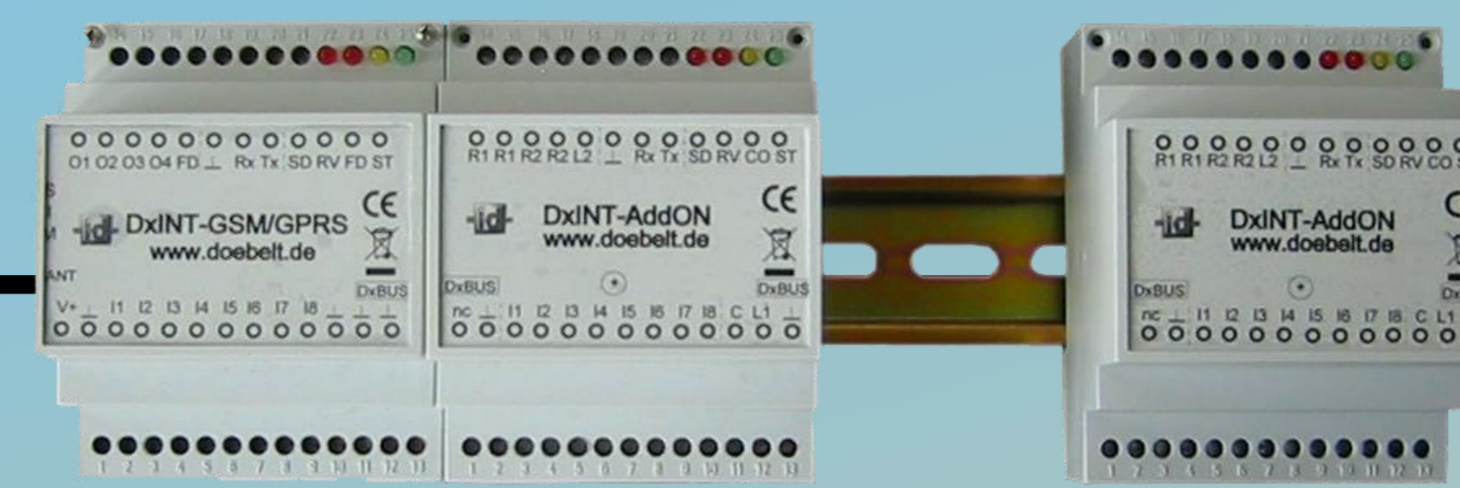
### Melden / Alarmieren



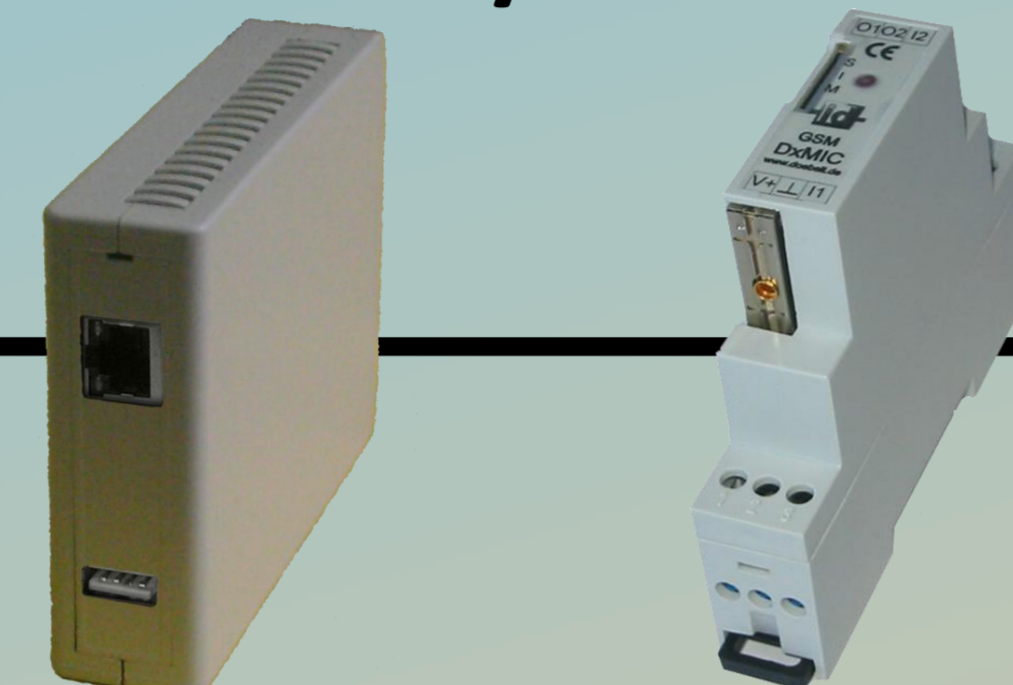
Kontakt

## Fernwirken/-messen

### DxINT



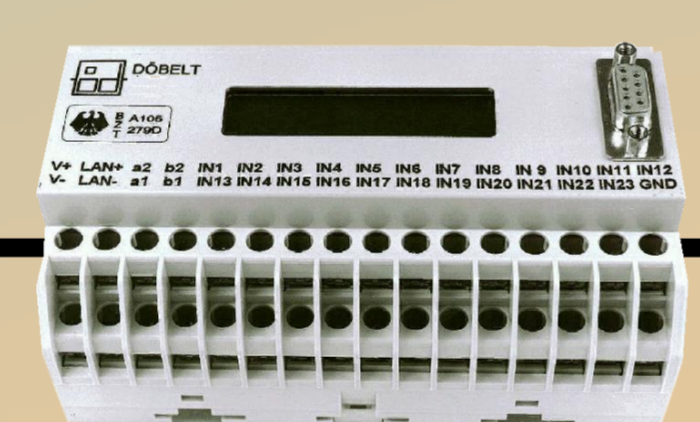
### DxPC / DxMIC



### DxGO



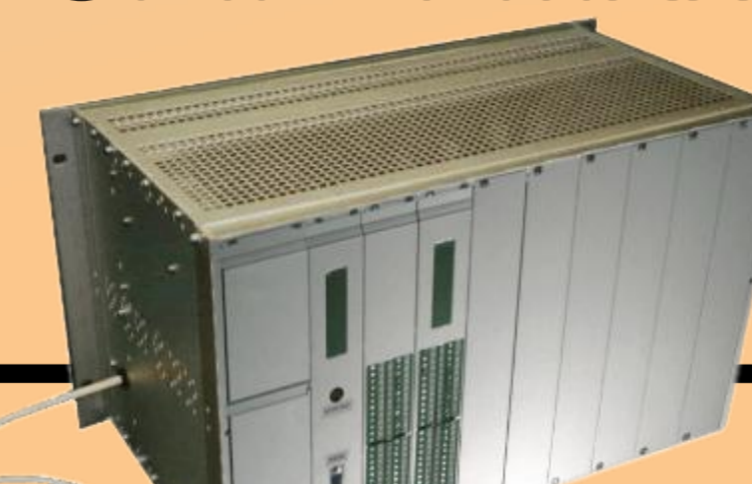
### UNINET MINI



### UNINET MIDI



### UNINET MAXI



Mögliche Versorgung

## Datenübertragung

### IPSec /Blowfish

ISM/  
TETRA/  
SATELLIT

IEC60870-5-104

@  
INTERNET  
INTRANET

IEC61850

Telefonnetz  
DSL/ISDN/  
ANALOG

IEC60870-5-101

M2M  
GSM/GPRS  
UMTS/LTE

IEC61968

PLC  
Standleitung

SEAB1F

## SCADA-Zentrale

### DxNET-Server

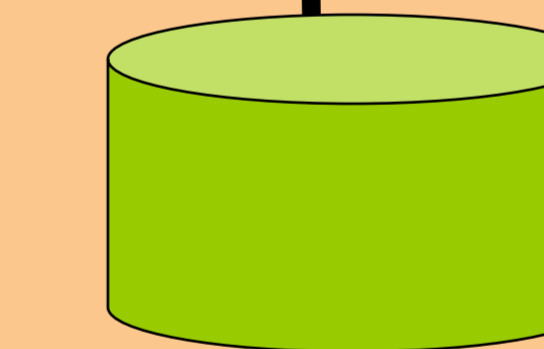


### Anbindung an Fremdsysteme

über  
IEC870-5-101  
IEC870-5-104  
IEC 63968  
Dateischnittstelle  
OPC u.a.



### DxAPS Server



### Database



### Heizungsanlage Müller Störung!

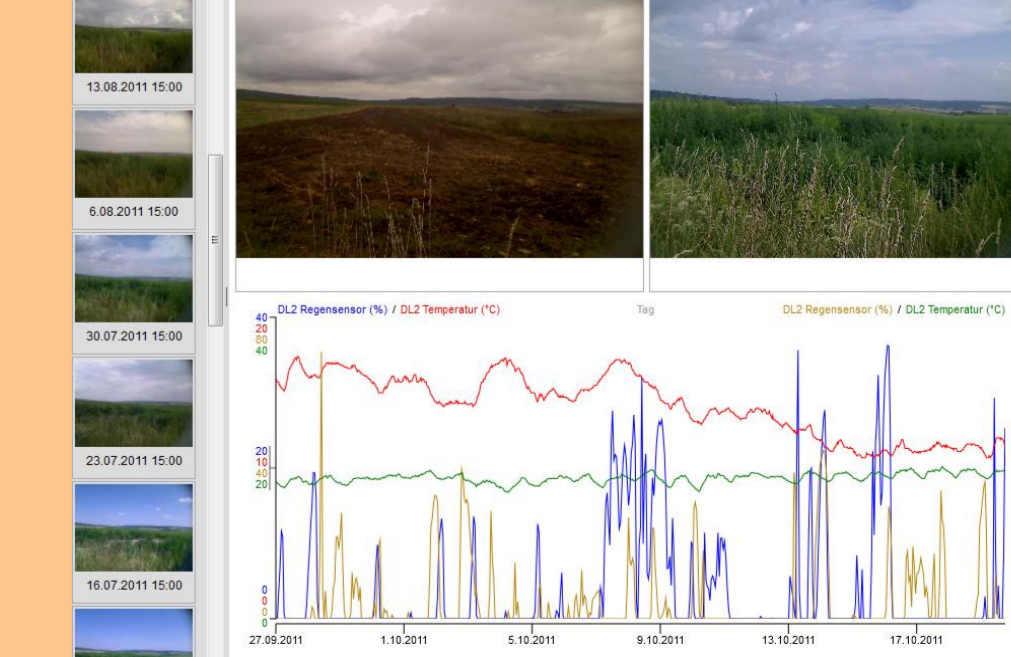
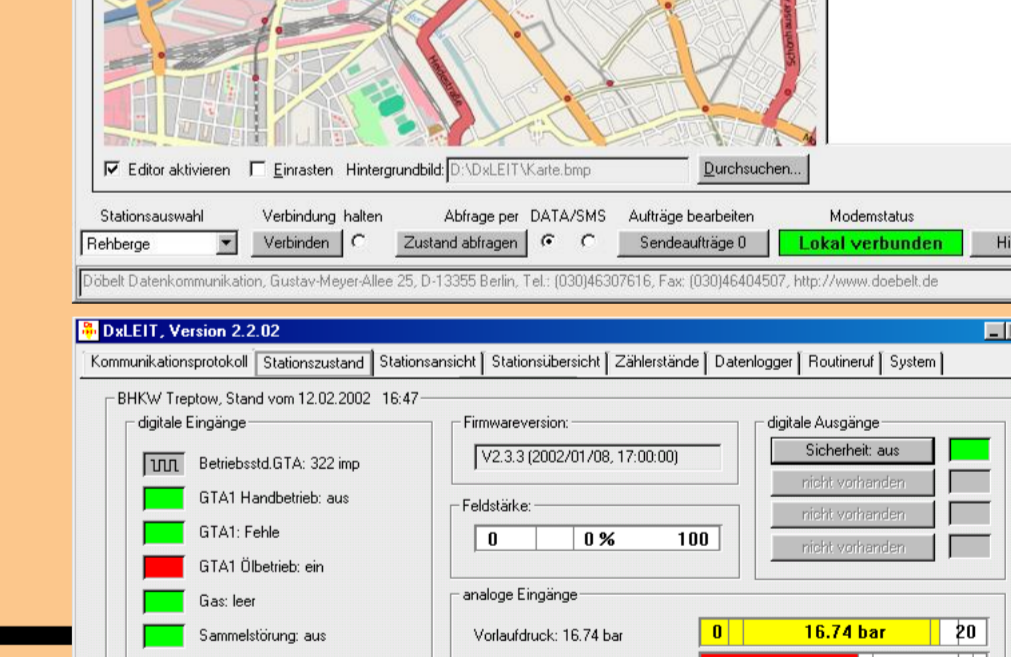
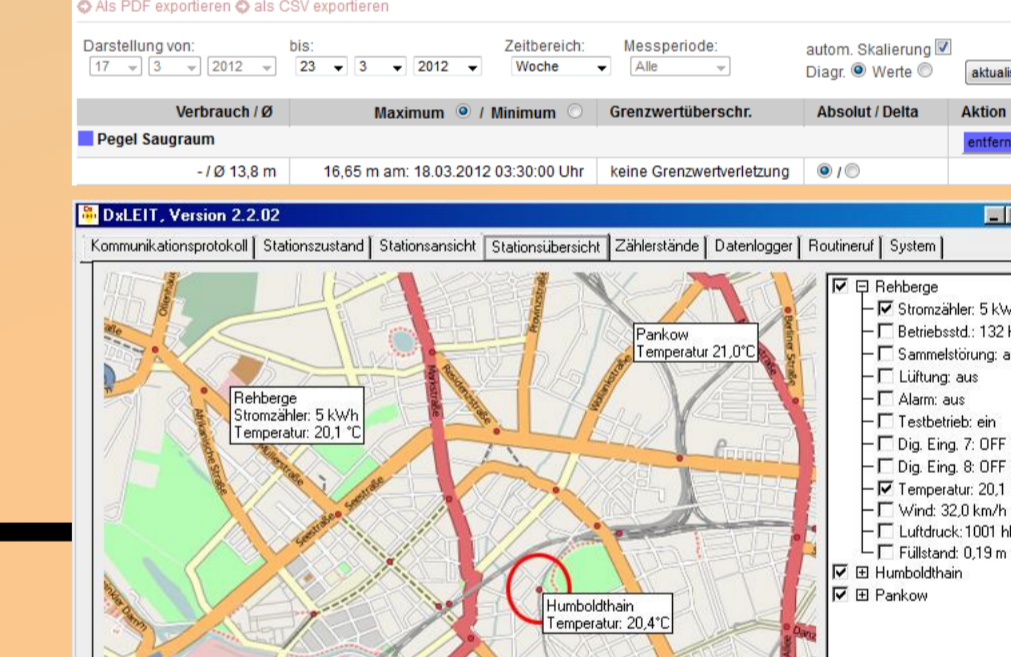
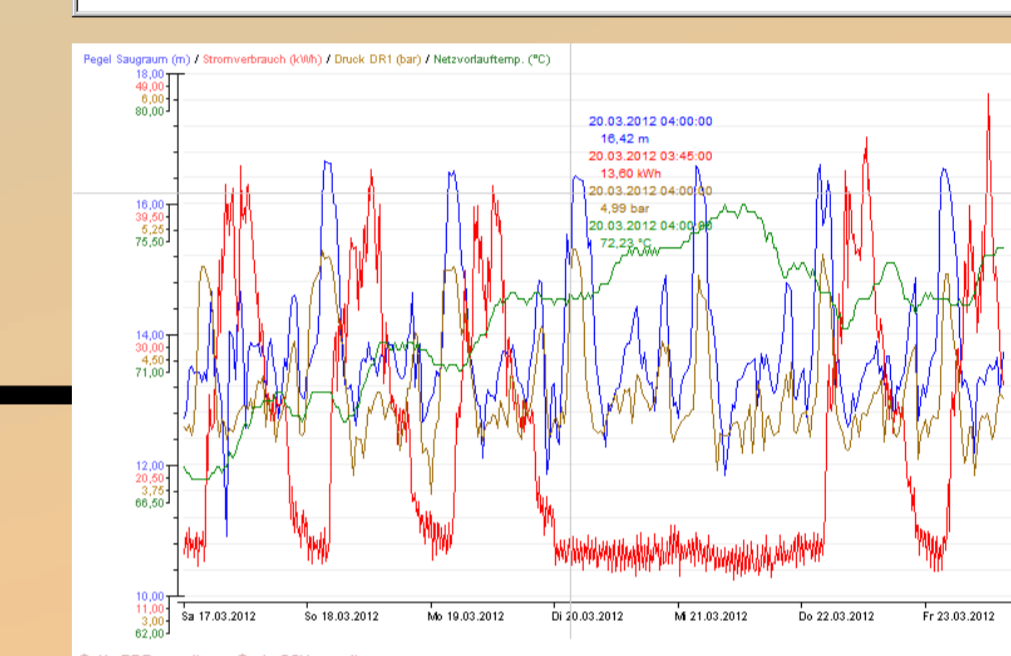
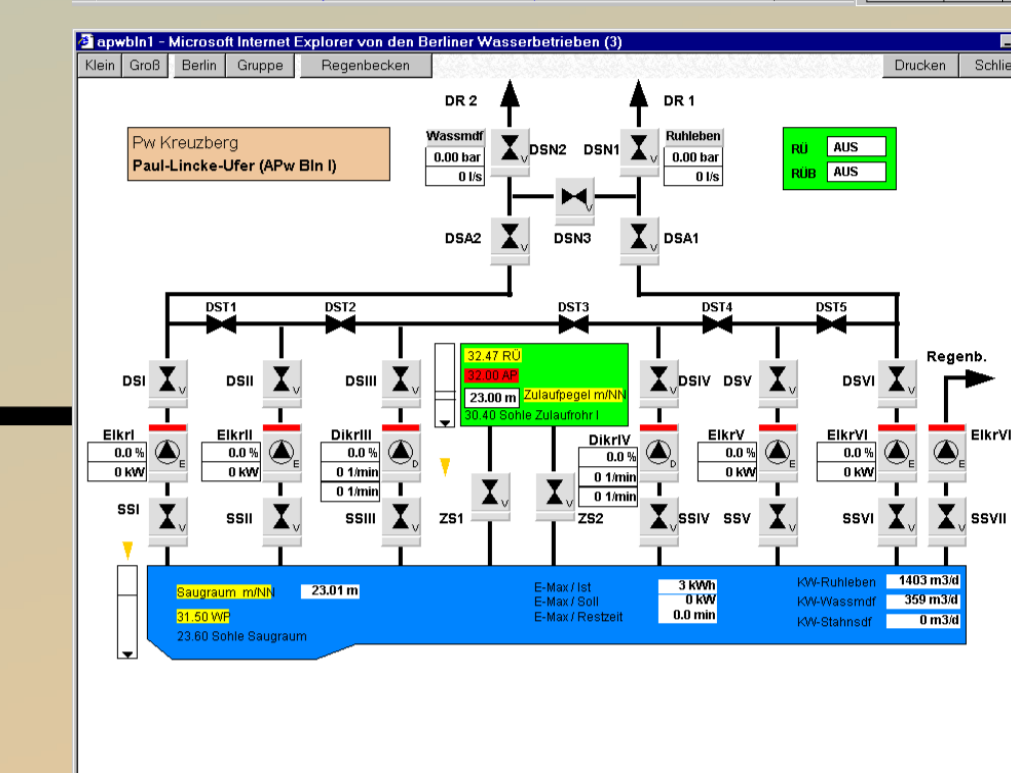
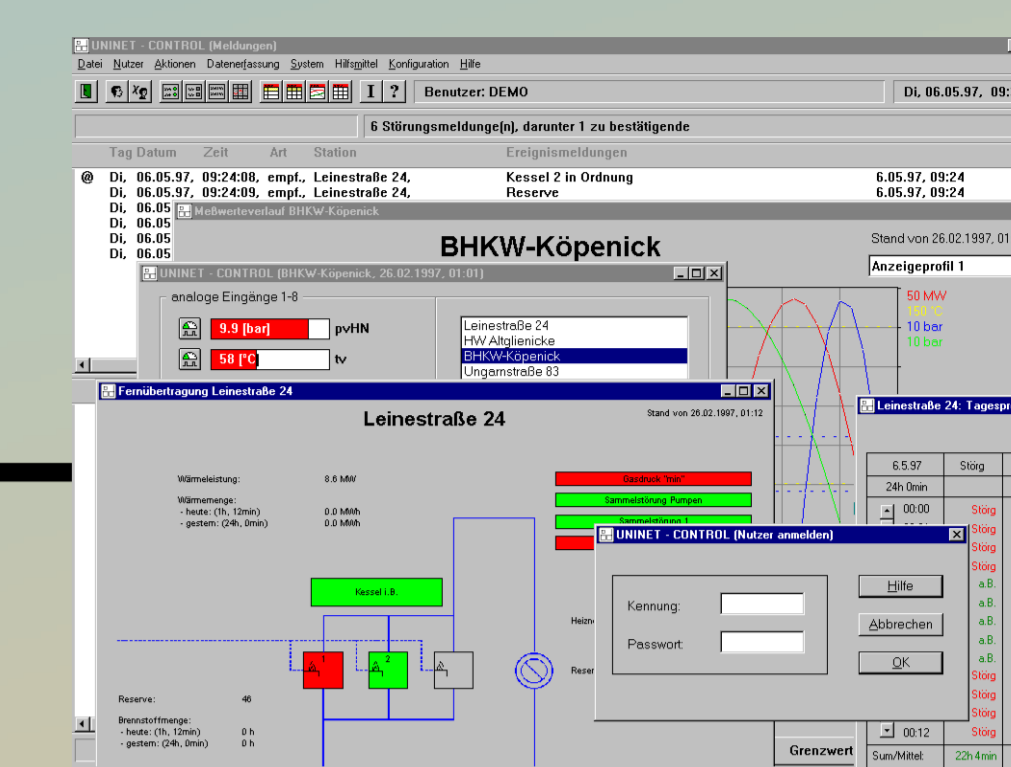
Temperatur > 85°C

Rohrbruch Schulz

Pumpe einschalten

### SMS-Alarmierung

## Visualisierung



IEC 60870-5-101/IEC 60870-5-104/Dateischnittstelle/ OPC/ IEC61968/..

